



- New version coming soon

Over 2,500 HLS systems have been sold, making it by far the most popular plant labelling software in the UK and Ireland. It's easy to see why.

**Plant database**

HLS can be bought with a database of over 10,000 plant names and descriptions which can all be edited. Or build up your own database with your personal data which can be imported in if provided in CSV file format. HLS has an in-built spell checker which can even check Latin plant names.

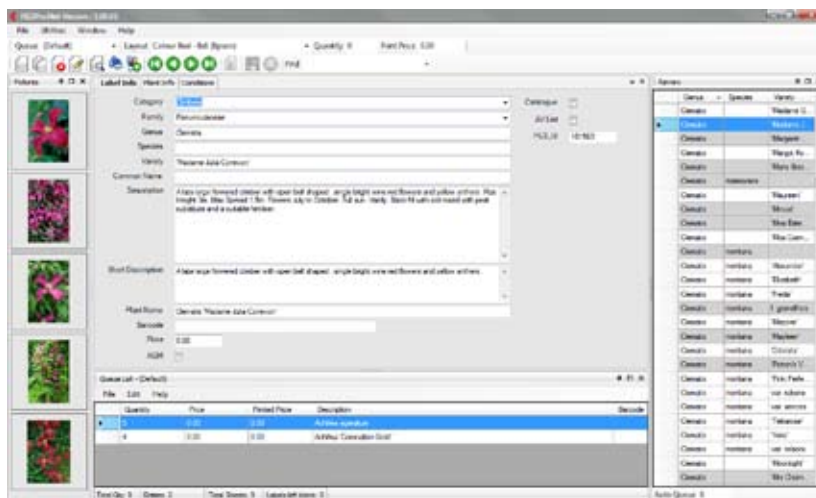
use to make finding your plant layouts easier. If one plant has a larger description than others the software will automatically reduce the size of font to fit the field on the label rather than chopping off any text.

**Ease of use**

HLS has been designed with simplicity in mind. The process of printing the labels is quick and easy and can be done by any staff regardless of any previous computer knowledge or experience.

HLS will automatically reduce the resolution of large picture files to fit the size of the picture on the label to speed up printing. If you are printing sheets of labels HLS will let you know if any labels will be blank on the last sheet based on the quantity in the print queue to help avoid wastage. You can record whether a particular plant has an Award of Garden Merit or is in your catalogue or Availability List and print off basic reports.

We have put in features that assist the user as much as possible, such as highlighting any plants that have a picture in the review list, or displaying only those label layouts that you can actually





### Label Design

HLS has layouts for over 200 different sizes and types of labels which can be personalised. For example put your logo and company details on the label, or change fonts, add borders or background colours. Make your labels and point of sale material stand out. HLS also has the ability to automatically print on both sides of certain label sizes (requires an OKI printer with a duplex unit).

### Company-wide labelling

HLS isn't just for printing plant labels. You can set up additional databases and use HLS for labelling other non-plant goods such as furniture or pet products. Install HLS on a network so that different departments can have simultaneous access to a company-wide labelling system.

### Pictures

You can link in the optional GAP Photos picture library with pictures for over 7,000 plant varieties. Ask us for a list of varieties that we have pictures for. You can also easily link in your own 'jpeg' images to the relevant plant record. By taking your own photos you have complete control over the look of your labels.

### Support

Support contracts are available for peace of mind, with weekday telephone and email access to our trained Technical staff here in the UK. Support also entitles you to a 5% discount off any labels, printers or consumables you buy from Greenfield during the support period.

